



BRAZIL

TRADE & INVESTMENT

EMBASSY OF BRAZIL IN ATHENS

Do you know How big is Brazil?



Why Brazil?



Why invest in Brazil

**Leading Regional
Economy**

USD 1,84 trillion

2021

**A Global Destination
for Investment**

USD 58 billion

FDI Inflow 2021

Large Pool of Workers

213 million

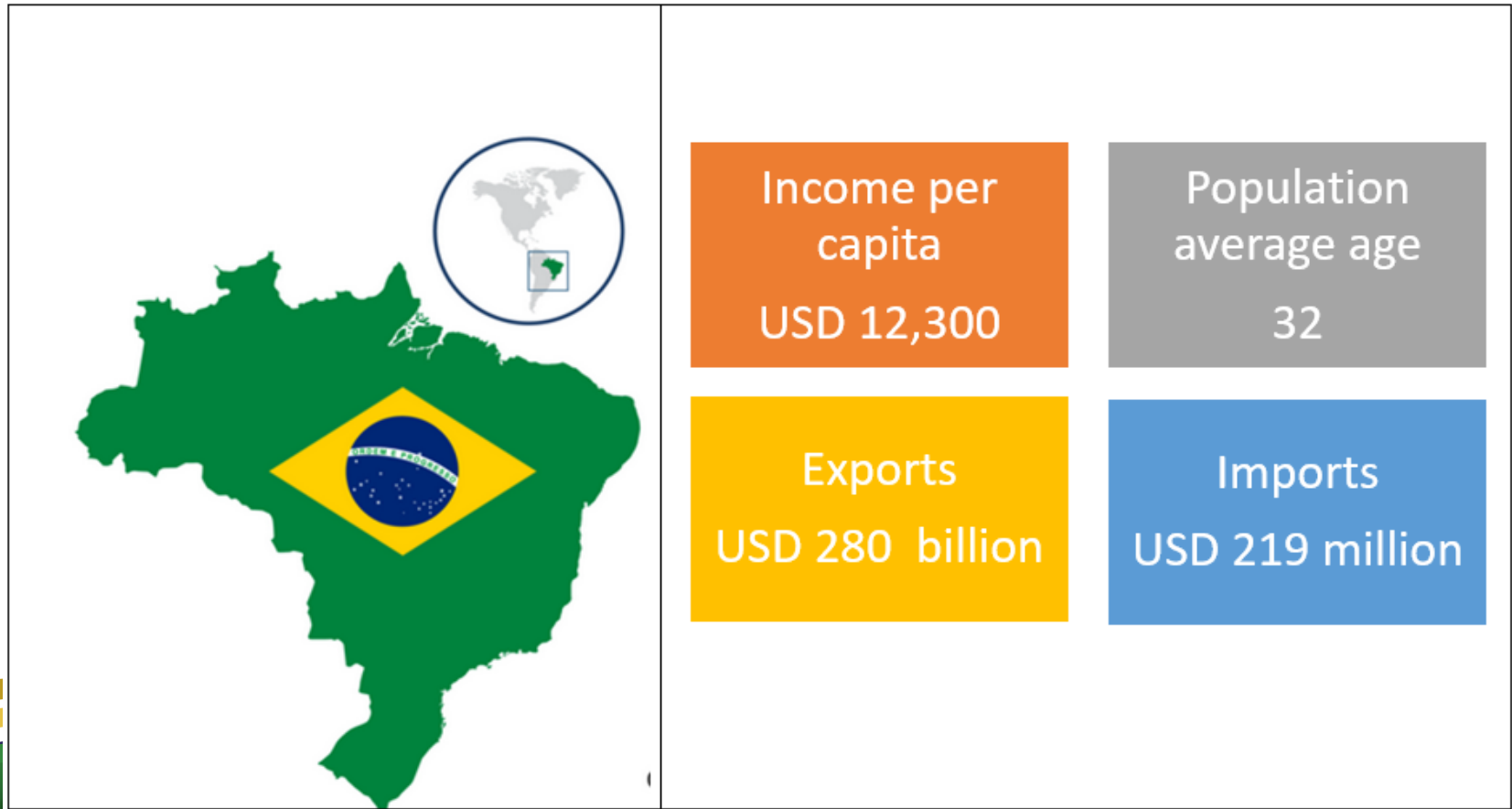
Population

**A Land of
Opportunities**

8,515,767 km²

Territory

Brazil in Numbers

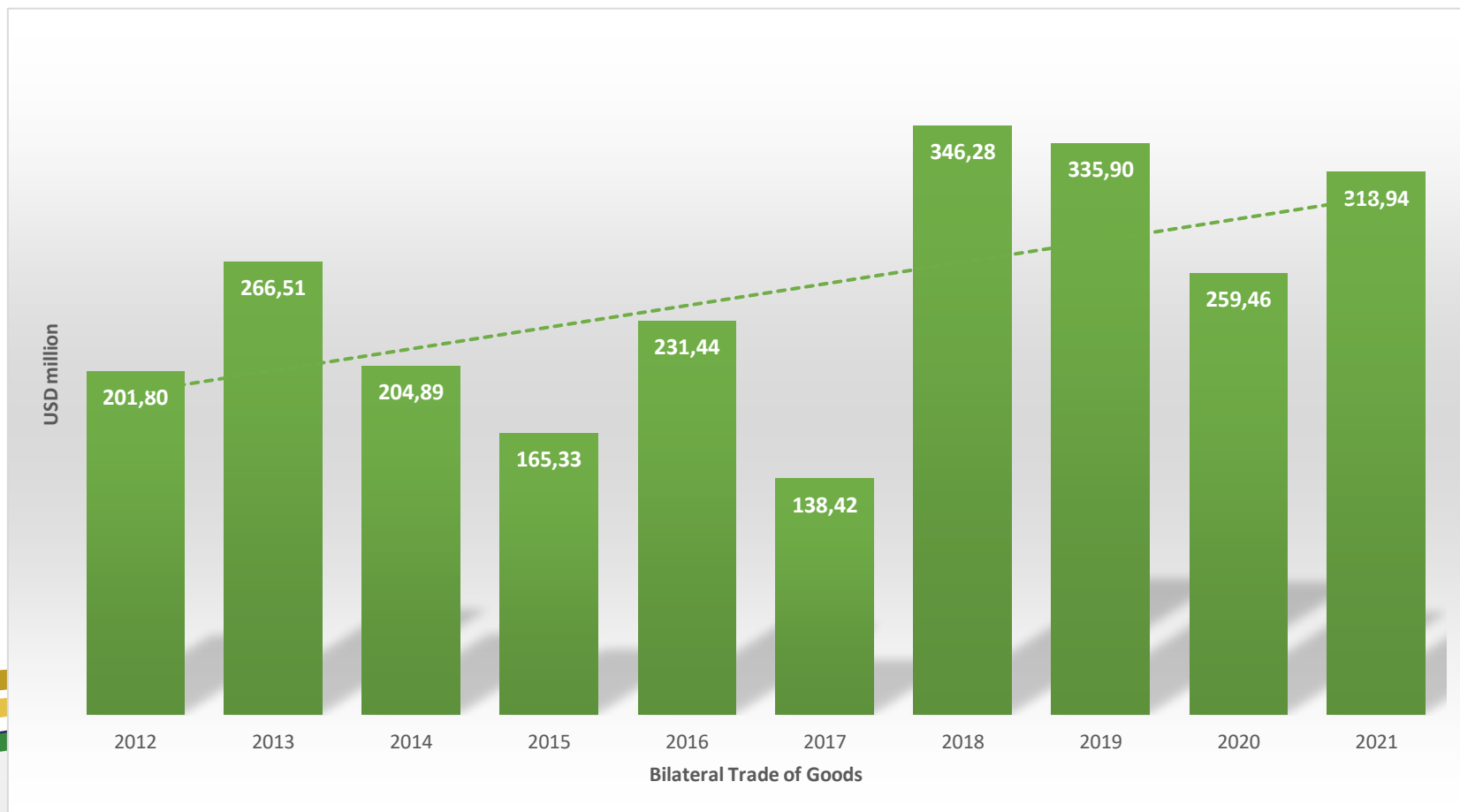


Some of the country's main competitive advantages are:

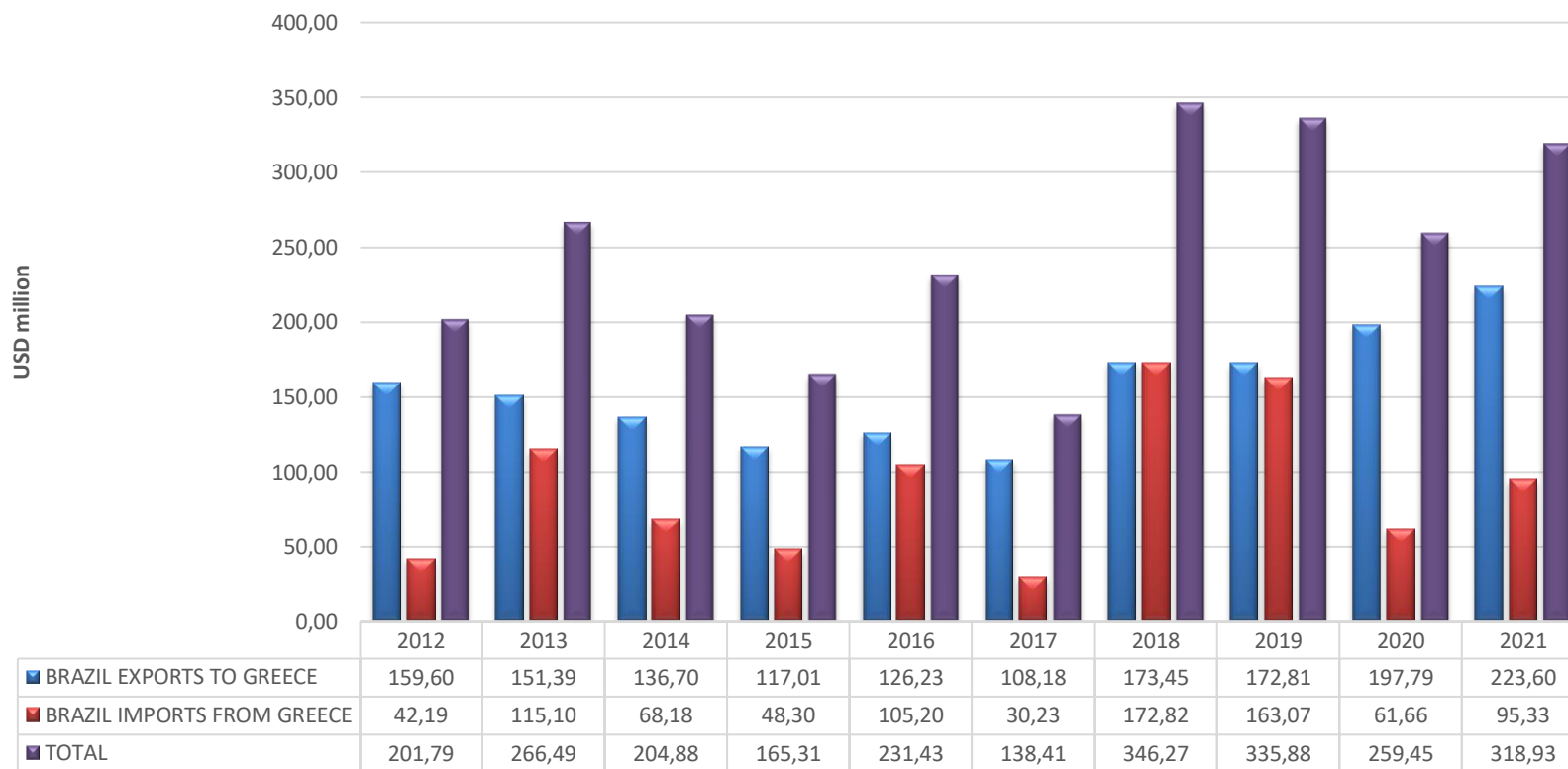
- Solid global player
- Huge domestic market
- Energy and Agricultural powerhouse
- Major infrastructure projects

- One of the largest producers and exporters of agricultural products
- Competitive differential in the sector of aircraft building, oil exploration in depth water and large offshore oil field
- Diversified science, technology and innovation system

Total trade of goods Brazil-Greece



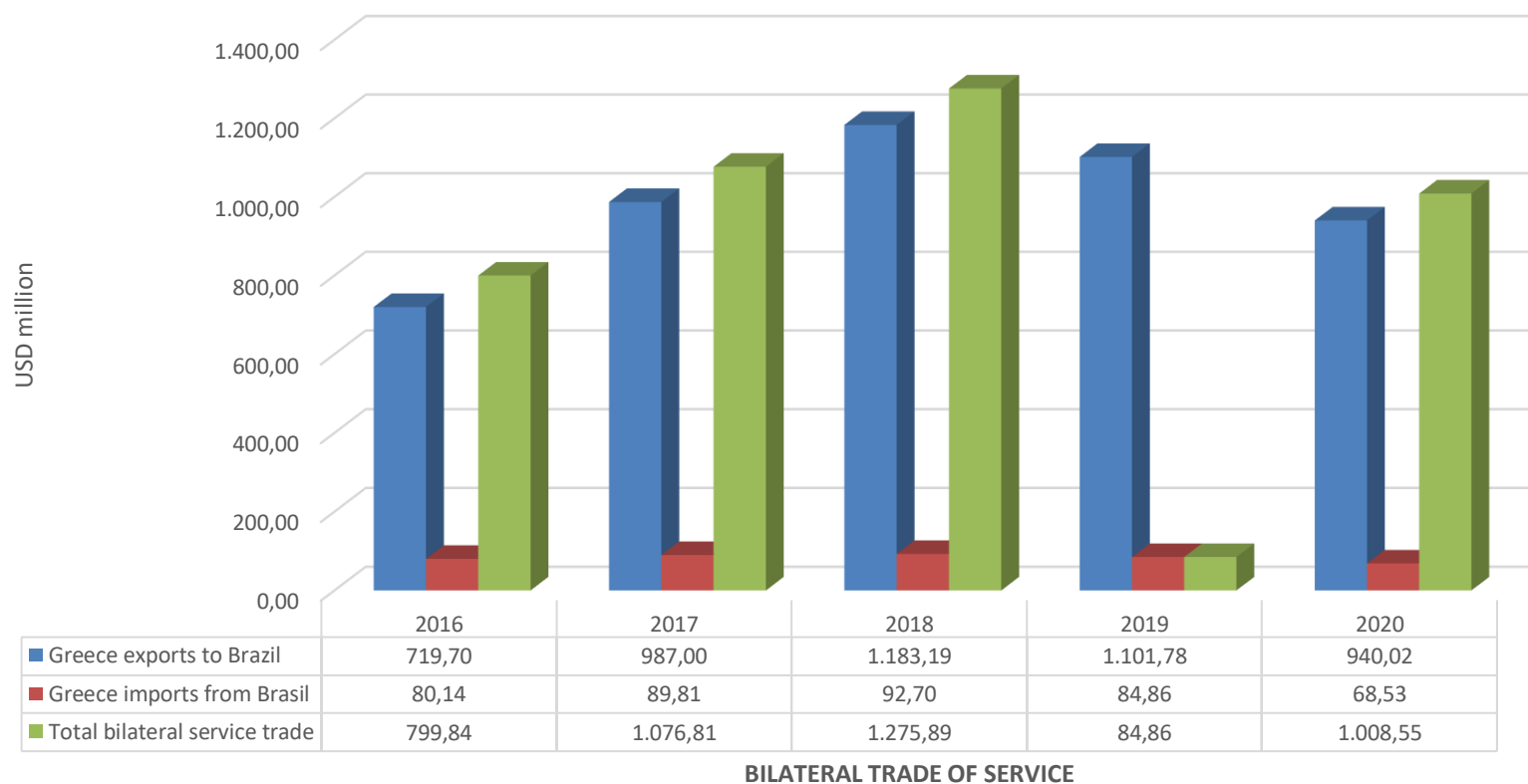
Trade of Goods Brazil-Greece



BILATERAL TRADE OF GOODS

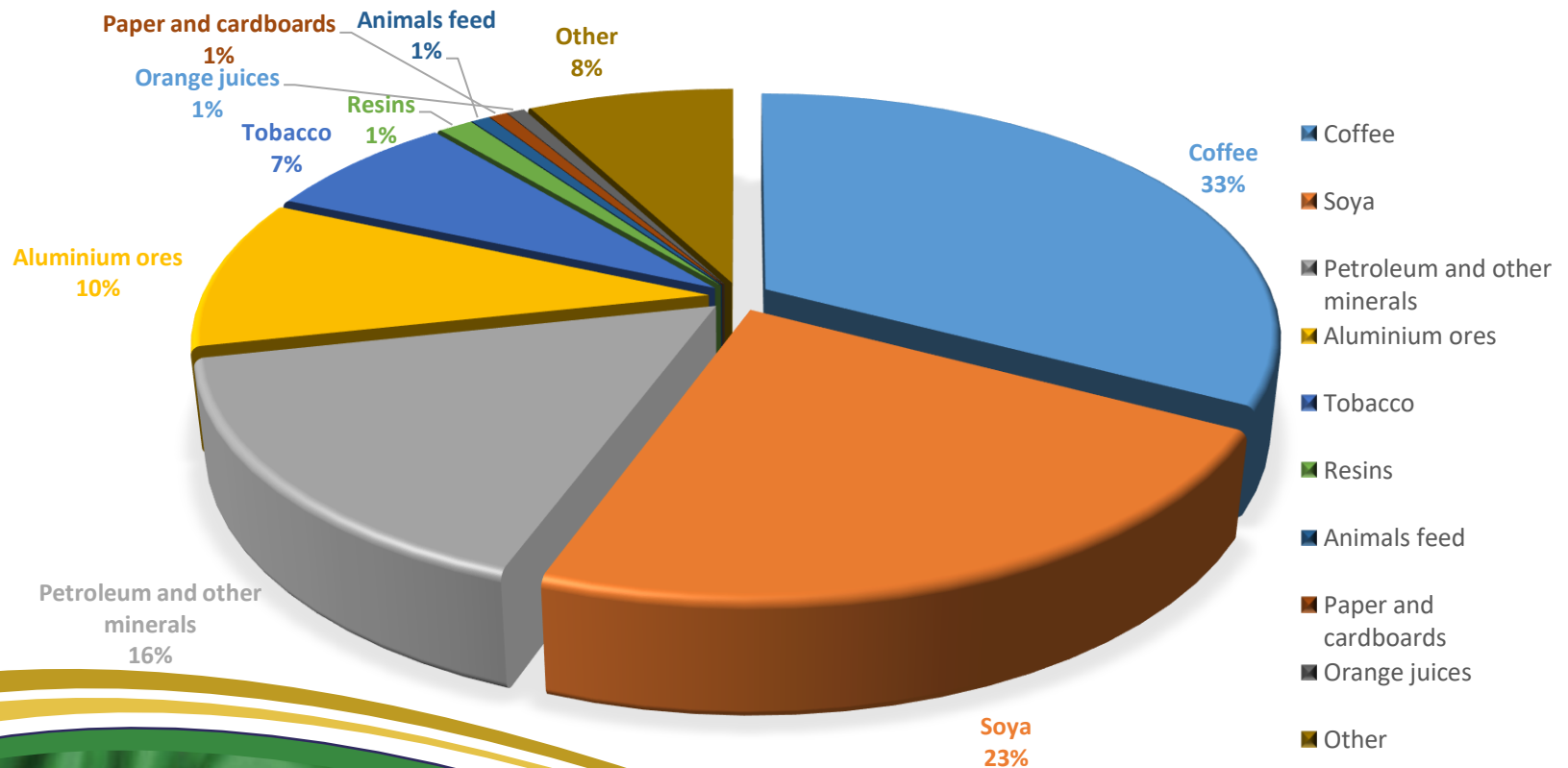
■ BRAZIL EXPORTS TO GREECE ■ BRAZIL IMPORTS FROM GREECE ■ TOTAL

Trade of services Brazil-Greece

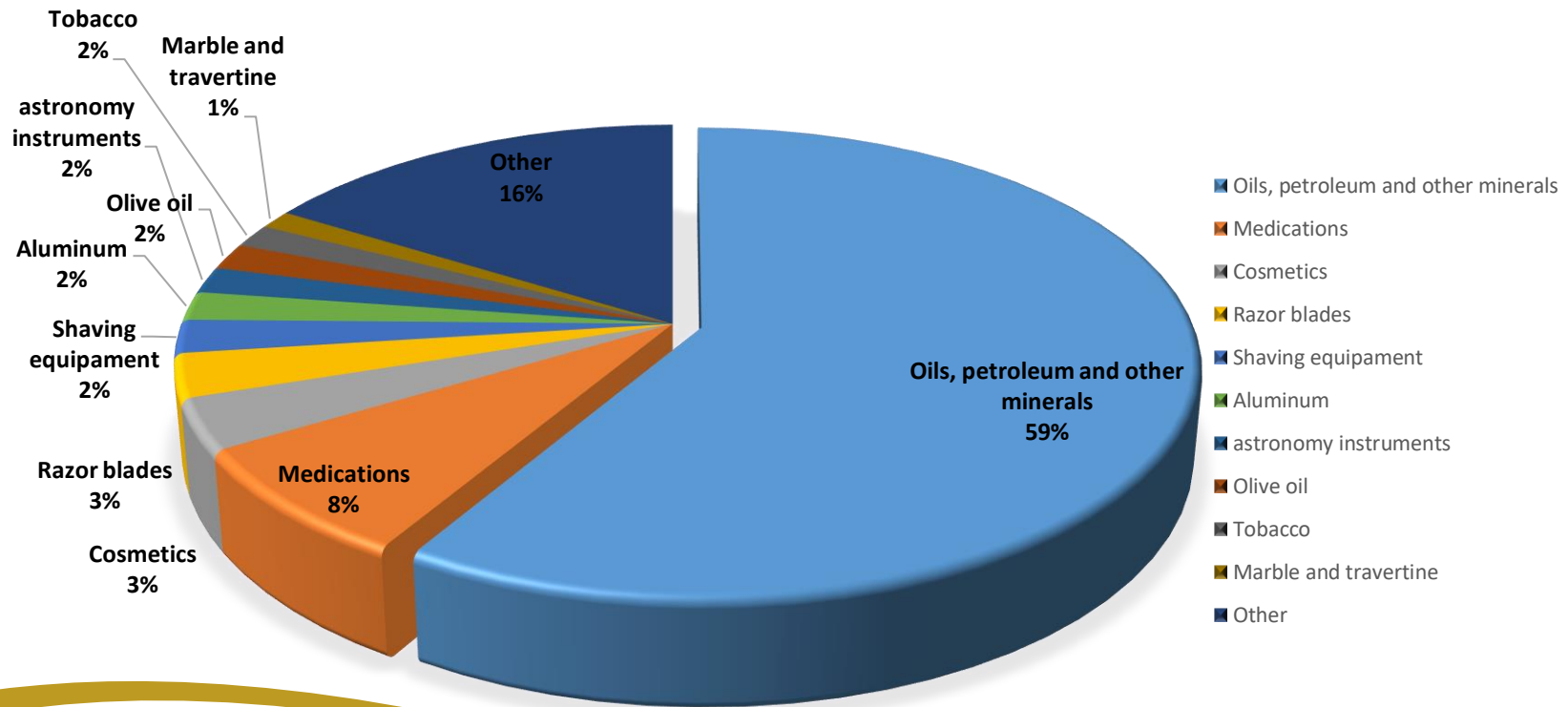


■ Greece exports to Brazil ■ Greece imports from Brasil ■ Total bilateral service trade

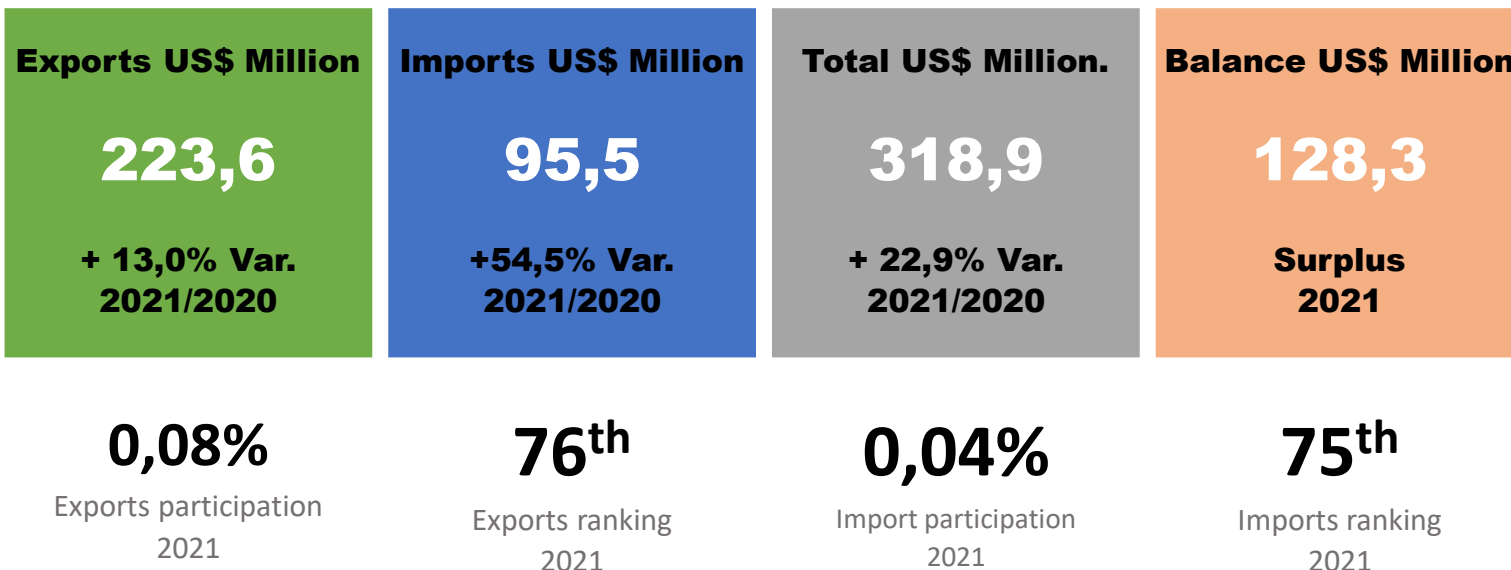
Brazil exports to Greece:



Brazil imports from Greece:

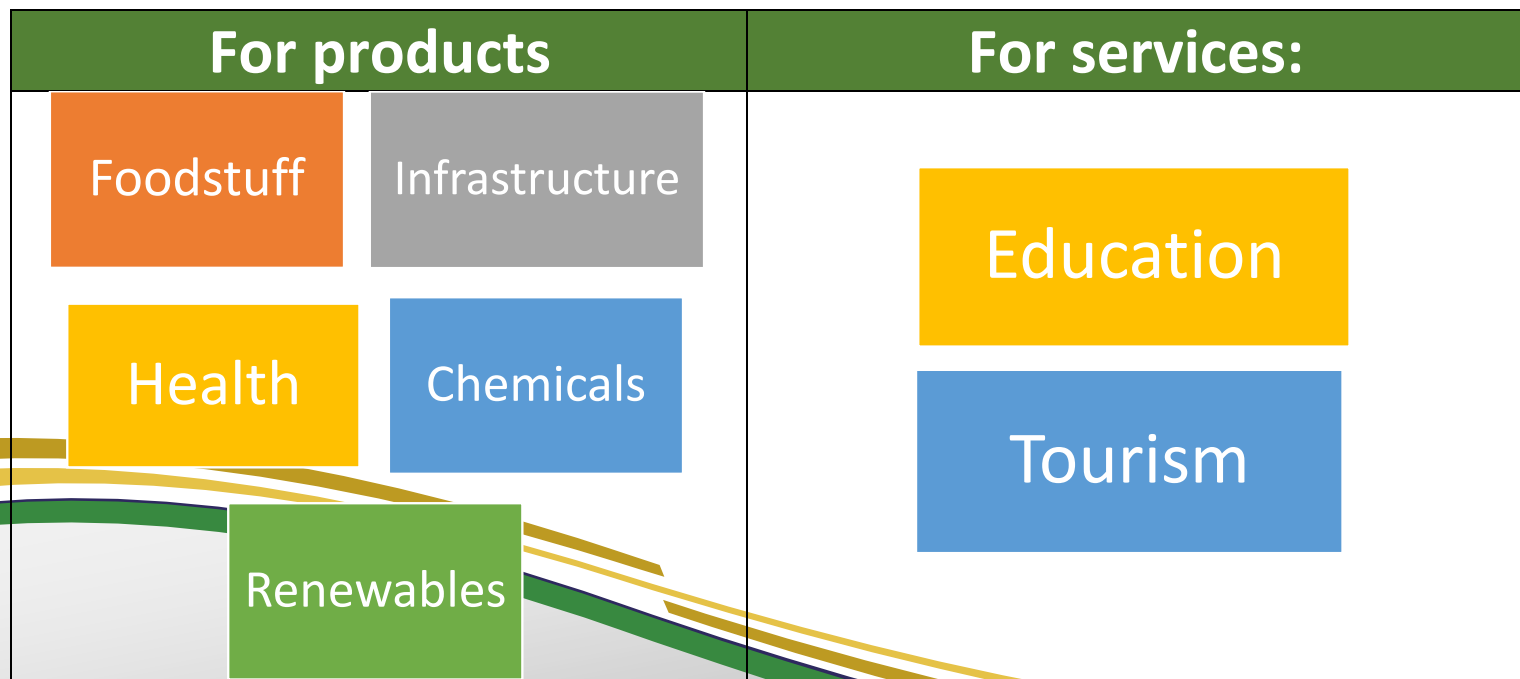


Brazil-Greece trade in 2021



Opportunities for Greek Exporters:

- Given the size and diversity of the Brazilian market, there is potential for export success in practically any industry.
- However, the commercial sector has prioritized seven sectors with high export potential for Greece :



Recommended sites:

- www.investexportbrasil.gov.br
- www.gov.br/produtividade-e-comercio-exterior/pt-br
- www.ibge.gov.br/en/home-eng.html
- apexbrasil.com.br/br/en.html
- [Guide on Investment Opportunities | Invest & Export Brasil \(investexportbrasil.gov.br\)](http://investexportbrasil.gov.br)

COMMERCIAL SECTOR - SECOM

Secom is open from 09:00 at 03:00 pm from Monday to Friday at the following address:

Vasilissis Sofias Avenue, no. 23 - 3o. floor

Zip code 10674, Athens - Greece

Tel: (+30) 210-7213039 - ext. 3

Fax: (+30) 210-7244731

E-mail: secom.atenas@itamaraty.gov.br

Brazil waits for you

